



schenckAccuRate



ProFlex® C 500 Feeder

## ProFlex® C 500 Feeder

Designed specifically for extruder manufacturers and compounders, the ProFlex® C 500 volumetric or gravimetric feeder packs maximum versatility into a very space and cost efficient package that's easy to operate, reconfigure, clean, and service.

Flexibility was a key design goal for the ProFlex® C 500. The AC drive motor assembly and material discharge positions can be exchanged, optimizing the feeder's ability to accommodate different mounting and clustering requirements for up to eight feeders. Additionally, the ProFlex® C 500 supports both single and twin-screw configurations allowing the feeder to easily be adapted to handle a wide range of materials.

The ProFlex® C 500 features an asymmetric flexible EPDM feed-hopper and a six-point external agitation system that can be adjusted without influencing screw speed.

Servicing the feeder can be done from two different sides, which reduces space requirements while providing easy access to all critical components. Disassembly is done quickly and easily without the need for special tools.

### MATERIALS OF CONSTRUCTION:

#### Contact materials-

- SS 304, visible components mirror polished

#### Non-contact materials-

- SS 304 / painted carbon steel

### FEED RATES:

- Helix diameters from .75" (19 mm) to 1.73" (44 mm)
- Theoretical feed rates from .035 to 18 cubic feet (1 to 500 liters) per hour

### FLEXIBLE FEED HOPPER:

- .7 cubic feet (20 liters) of material storage capacity
- EPDM, grey, FDA approved, max. Temp. 266°F (130°C)

### HOPPER EXTENSION:

- 1.75 cubic feet (50 liters) capacity
- Clamps for dust tight mounting

### MOTOR SPECIFICATIONS:

- Helix drive: 3 phase AC motor, 0.25 HP.
- Agitation drive: 3 phase AC motor, 1.0 HP.
- 230 VAC, single or three phase, 50/60 Hz.
- 400 VAC, 3 phase, 50 Hz or 460 VAC, 3 phase, 60 Hz.

### WEIGH MODULE SPECIFICATIONS: (Optional)

- 2 x 60 kg (132 lbs.) strain gauge load cells (HBM, type PWS) 2mV/V
- Material of construction: powder coated carbon steel

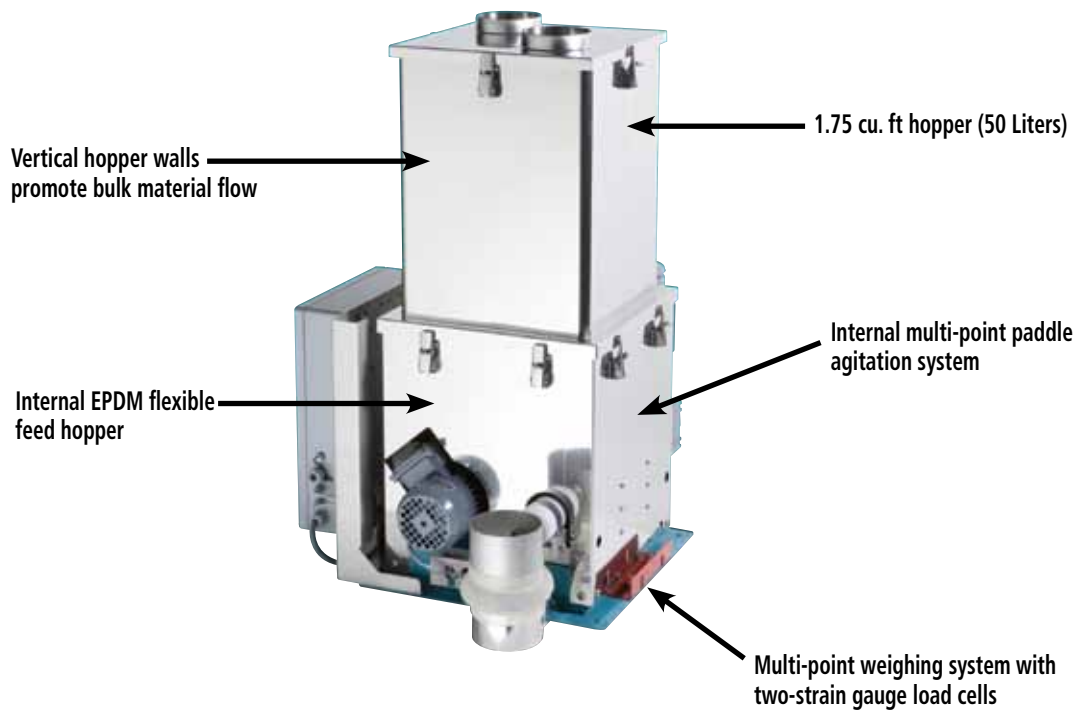
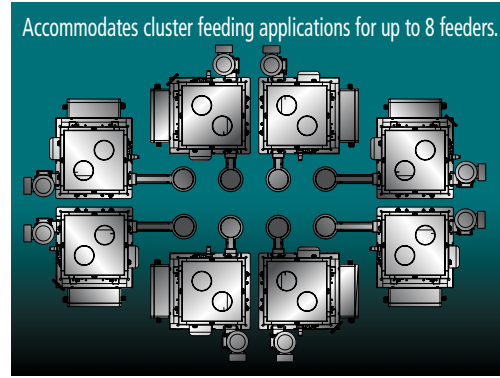
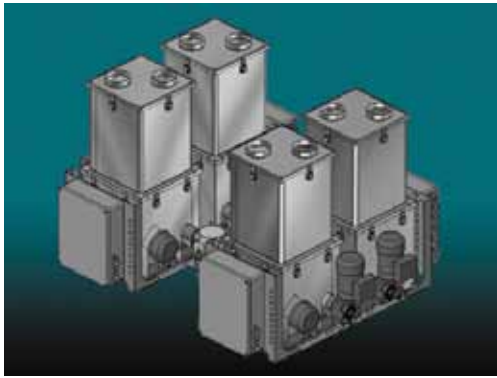
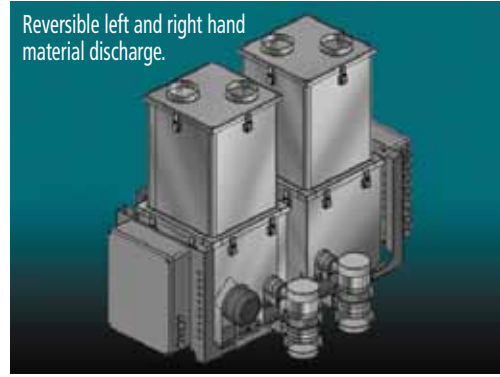
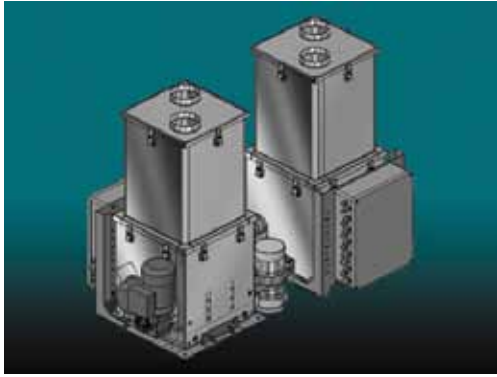
Specifications

**For more information, please contact us at 1-800-558-0184 or Fax: 262-473-4384  
E-mail: [mktg@accuratefeeders.com](mailto:mktg@accuratefeeders.com) Web site: [www.accuratefeeders.com](http://www.accuratefeeders.com)**

### BENEFITS OF THE PROFLEX® C 500 FEEDER:

- Motor and nozzle can be repositioned to meet space requirements.
- Multi-point weighing system with two strain gauge load cells.
- Single and twin screw configurations for handling a variety of materials.
- Material discharge positions can be exchanged accommodating cluster feeding applications for up to 8 feeders.

With the ability to exchange the AC drive motor assembly and material discharge position the feeder can be clustered in multiple configurations for plastics processing applications.



## Quick and Easy Disassembly for Product Changeovers.



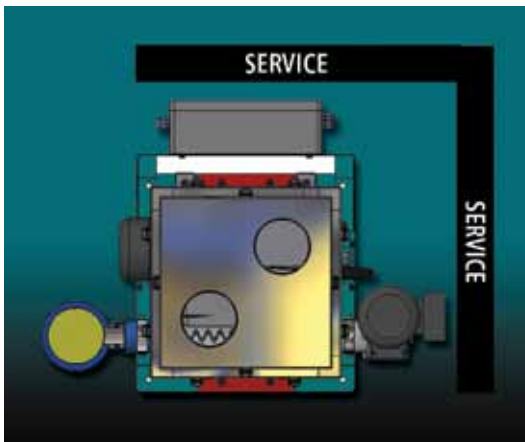
Disassembly is quick and easy without the need for special tools.



The ProFlex® C 500 is excellent for feeding a wide range of resins, colors, fillers, fibers, impact modifiers, and UV inhibitors.

**ProFlex® C 500 Feeder**

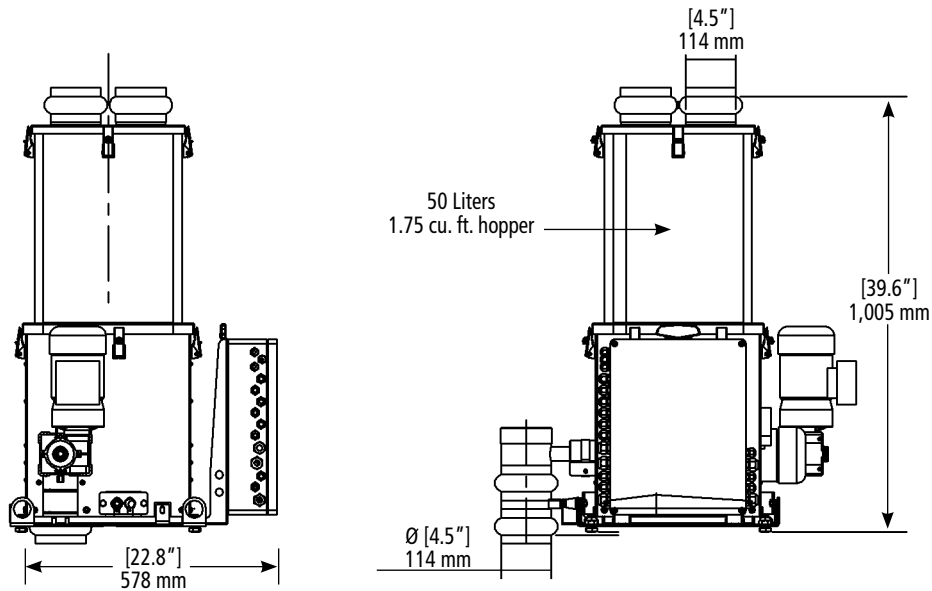
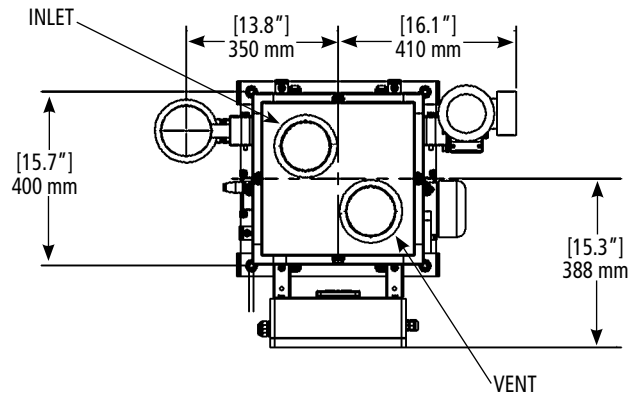
**Specifications**



The ProFlex® C 500 can be serviced from two different sides, simplifying access to the feeder.



The angular discharge of the helix and nozzle promotes a consistent flow for a wide variety of resins, colors, fillers, impact modifiers, and UV inhibitors.



### EQUIPMENT CONFIGURATION

Gravimetric feeder without extension hopper and cover .....	218 lbs. (99 kg)
Volumetric feeder without extension hopper and cover.....	198 lbs. (90 kg)
Extension hopper 1.75 cu. ft (50 liters) .....	17 lbs. (7.9 kg)
Cover for automatic refill .....	4 lbs. (1.9 kg)
Cover for manual refill. ....	7 lbs. (3.2 kg)

### WEIGHT

### OPERATING SYSTEMS FOR THE PROFLEX® C 500

Utilizing the DISOCONT® control with the ProFlex® C 500 provides users with a modular electronic system that easily integrates into Allen-Bradley, Modicon, Siemens and many other PLC's to offer high-end gravimetric control.

Add the OP1 operator interface for operation, calibration, trending, and basic diagnostics all in one easy to use system.

The DG-2000™ Group Manager adds graphics, recipe management, trending, and touch-screen operation to the DISOCONT® gravimetric control family.

NOTE: Dimensions subject to change without notice. Please contact sales for detailed drawings.

