



schenckAccuRate



MECHATRON® "MS" Vibro Feeder

MECHATRON® "MS" VIBRO FEEDER

Gravimetric and Volumetric MECHATRON® "MS" Vibro Feeders are ideal for metering a wide variety of powders, granules, chips, flakes, and fibers. With a uniquely designed maintenance free feed chute dry solid materials are gently metered for applications in the plastics, food, chemical, and pharmaceutical industries. A conical hopper ensures consistent material flow in feed rates up to 353 cubic feet (10,000 liters) per hour. Like all MECHATRON® feeders the "MS" Vibro has the unique ability to be disassembled, cleaned, reconfigured, and serviced from the non-process side eliminating the need to remove upper extension hoppers, bins, bulk bags or IBC's for performing general maintenance.

MATERIALS OF CONSTRUCTION:

Contact Materials –

- 316 stainless steel

Non-Contact Materials –

- Carbon steel, powder coated RAL5018

MATERIAL PARTICLE SIZE:

- .02 to .2" (0.5 to 5 mm)

BULK DENSITY:

- 18.7 lbs./cu. ft. to 62 lbs./cu.ft.

MATERIAL TEMPERATURE:

- -22° to 212° F (-30° to 100° C)

FEED TRAYS:

Sizes –

- 4.72" (120 mm) wide
- 9.84" (250 mm) wide

FEED RATES:

- 4.72" (120 mm) wide tray –
 - 0.18 to 78 cubic feet (5 to 2,200 liters) per hour
- 9.84" (250 mm) wide tray –
 - 0.71 to 353 cubic feet (20 to 10,000 liters) per hour

CONI-STEEL™ FEED HOPPER:

- 0.71 cubic feet (20 liters) of material storage capacity.

HOPPER EXTENSIONS:

- 2.5, 7.5, 13.2 cubic feet (75 to 375 liters) capacities
- Dust tight 360 degree band clamp mounting

ELECTROMAGNETIC VIBRATOR:

4.72" (120 mm) wide tray –

- Voltage: 230 VAC
- Nominal current: .62 amps

9.84" (250 mm) wide tray –

- Voltage: 230 VAC
- Nominal current: 1.2 amps

MOUNTING CONFIGURATIONS:

- Floor mount – painted mild carbon steel
- Optional – floor mount stainless steel

WEIGH MODULE SPECIFICATIONS (optional):

- Dual Schenck stainless steel strain gage load cells. No summing box required.
- Weigh modules available in 441 lbs. (200 kg), 661 lbs. (300 kg), and 1,323 lbs. (600 kg) capacities.

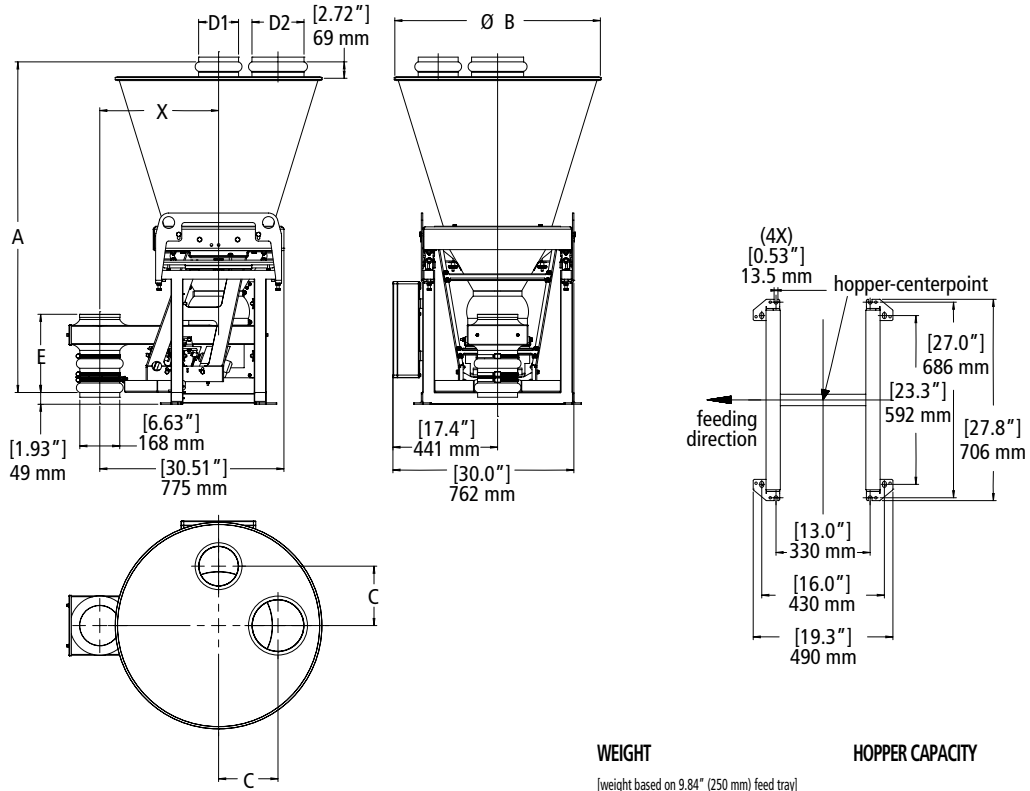
PERFORMANCE:

- Volumetric accuracies of $\pm 2\%$ to 5% of feed rate setpoint at 2 sigma.
- Gravimetric accuracies of $\pm 1/4\%$ to 1% of feed rate setpoint at 2 sigma.

For more information, please contact us at 1-800-558-0184 or Fax: 262-473-4384

E-mail: mktg@accuratefeeders.com

Web site: www.accuratefeeders.com



EQUIPMENT CONFIGURATION

Stand + control + feeder (total)	370 lbs. (168 kg)
Stand + control + feeder + 2.5 cu. ft. (75 L) extension hopper + cover (total)	381 lbs. (173 kg)
Stand + control + feeder + 7.5 cu. ft. (210 L) extension hopper + cover (total)	395 lbs. (179 kg)
Stand + control + feeder + 13.2 cu. ft. (375 L) extension hopper + cover (total)	423 lbs. (192 kg)

WEIGHT

[weight based on 9.84" (250 mm) feed tray]

HOPPER CAPACITY

NOTES:

- Standard infeed to discharge (X) is 19.7" (500 mm)
- System scale capacity:
 Total (2 Load Cells)
 441 lbs. (200 kg)
 661 lbs. (300 kg)
 1,323 lbs. (600 kg)
- Cover is available in auto refill (shown), manual refill or with no cover. Cover may be rotated up to 360° to meet application requirements.

Standard inlet and vents:

- For 2.5 cu. ft. (75 L) hoppers = 6.63" (168 mm) inlet & 4.5" (114 mm) vent
- For 7.5 cu. ft. (210 L) hoppers = 8.63" (219 mm) inlet & 6.63" (168 mm) vent
- For 13.2 cu. ft. (375 L) hoppers = 8.63" (219 mm) inlet & 6.63" (168 mm) vent

- Electrical service requirements:
 230 VAC, single phase, 50/60 Hz

EXTENSION HOPPER DIMENSIONS

Capacity	Dim "A"	Dim "B"	Dim "C"	Dim "D1"	Dim "D2"
2.5 cu. ft. (75 L)	42.6" (1,083 mm)	26.6" (676 mm)	7.9" (200 mm)	4.5" (114 mm)	6.63" (168 mm)
7.5 cu. ft. (210 L)	54.76" (1,391 mm)	34.06" (865 mm)	9.8" (250 mm)	6.63" (168 mm)	8.63" (219 mm)
13.2 cu. ft. (375L)	66.57" (1,691 mm)	34.06" (865 mm)	9.8" (250 mm)	6.63" (168 mm)	8.63" (219 mm)

FEED TRAY DIMENSIONS

Tray Size	Dim "E"
4.72" (120 mm)	12.17" (309 mm)
9.84" (250 mm)	12.95" (329 mm)

NOTE: Dimensions subject to change without notice. Please contact sales for detailed drawings.